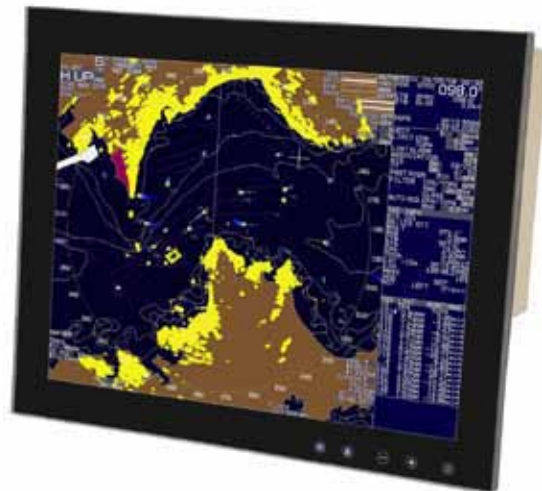


## INNOVATIVE TOUCH CONTROL BRIDGE MONITORS FOR SUPERYACHTS

Aadaptiv has incorporated a number of key unique features into their range of bridge monitors which are ideally suited to operations in the superyacht world. Touch sensitive controls and optically bonded LCD Panels to minimise reflection and maximise clarity, the monitors are an ideal option either for new build or for refit upgrades.

Unlike other monitors on the market, the Aadaptiv touch control system features all the controls built in to monitor 'edge-2-edge' front glass. LED touch sensitive controls facilitate ease of operation for the key functions – power, backlight brightness, signal source and the OSD menu and maintain 'clean lines' of a true glass bridge. These functions can also be operated by infrared remote control.

The fully watertight display incorporates rear connections which are bottom entry and not through the back - likely to increase the depth and bulk and substantially reducing stowage area. With a 6mm laminated safety glass, the Aadaptiv monitors provide a unique mix and match capability. Based on the brightness output and the LCD panel sizing, a suite of monitors can be created to communicate seamlessly within the same housing, at the same time providing the ability to interface with slow scan legacy signals if being used in a refit and retaining the original systems.



With dual voltage AC/DC power input as standard, the monitor also features an ambient light sensor, which triggers an automatic dimmer to the surrounding light. This works with both daylight and sunlight monitors which are supported and guaranteed with top ratings for clear vision. The monitors are available in four different sizes to provide the best widescreen scale formatting and in a combination of daylight or sunlight displays, as well as waterproof.

Aadaptiv is supported with a full service and back up support network in Europe, United States and Australasia. The monitors are 'Designed to Comply' to maritime regulations surrounding recreational and commercial vessels and type approval program is underway.

Email: [sales@aadaptiv.com](mailto:sales@aadaptiv.com)  
Web: <http://www.aadaptiv.com>  
Telephone: +44 845 224 3045

Date of Issue: 31st January 2011